

+ Copenhagen  
10<sup>th</sup> April 2014  
Palace Hotel



+ Polar cod & Petroleum



The Research Council  
of Norway

# LOCATION

**Palace Hotel Copenhagen** has a privileged location, in the centre of Copenhagen and is one of this city's most well known hotels. The hotel is situated right on the Town Hall Square just next to Strøget, a pedestrian street with a huge variety of shops, and just across the Tivoli Gardens.

## TRAIN FROM THE AIRPORT

The train from Copenhagen airport takes only 12 minutes to Central station and leaves every 10 minutes during the day

## METRO

The Metro to Nørreport Station takes about 15 minutes to the hotel and runs every 5-10 minutes. You need a ticket for 3 "Zoner". The distance from the metro station to the hotel is app. 1 kilometre and it takes around 20 minutes to walk.

## TAXI

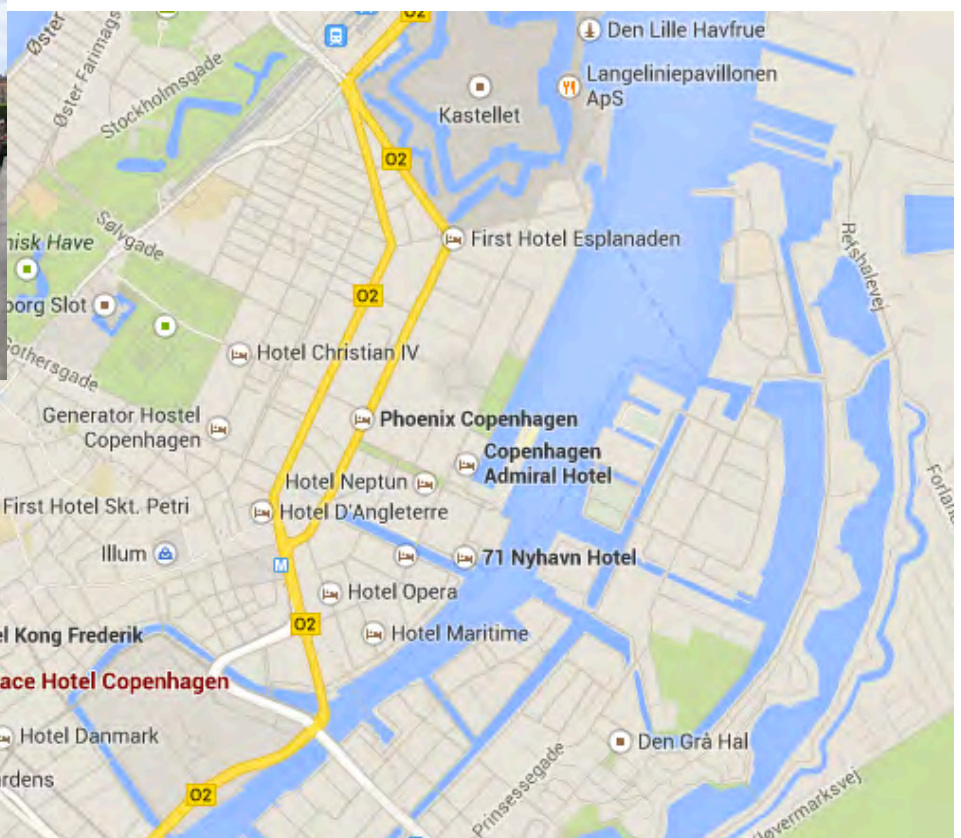
A taxi from the airport to the hotel, takes app. 20 minutes and costs about DKK 300.00.

## BUS

The bus terminal is 100 metres from the hotel and it takes only a few minutes to walk.

The sightseeing buses are located outside the Hotel and you buy tickets in the bus or directly at the hotel.

<http://palacehotelcopenhagen.com>



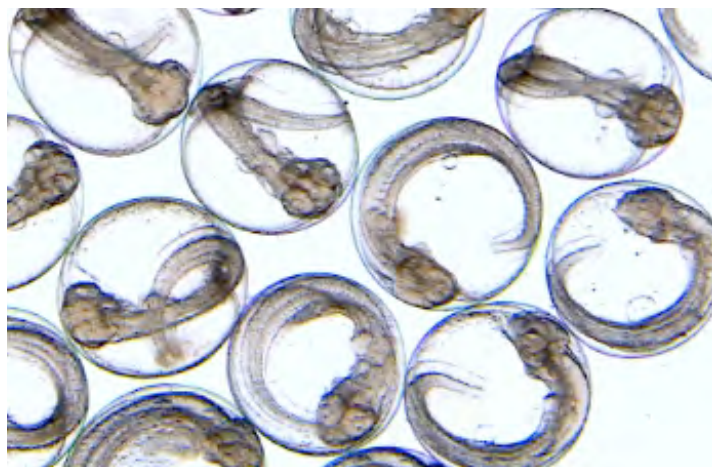


# + Programme

## Morning session



## Afternoon session

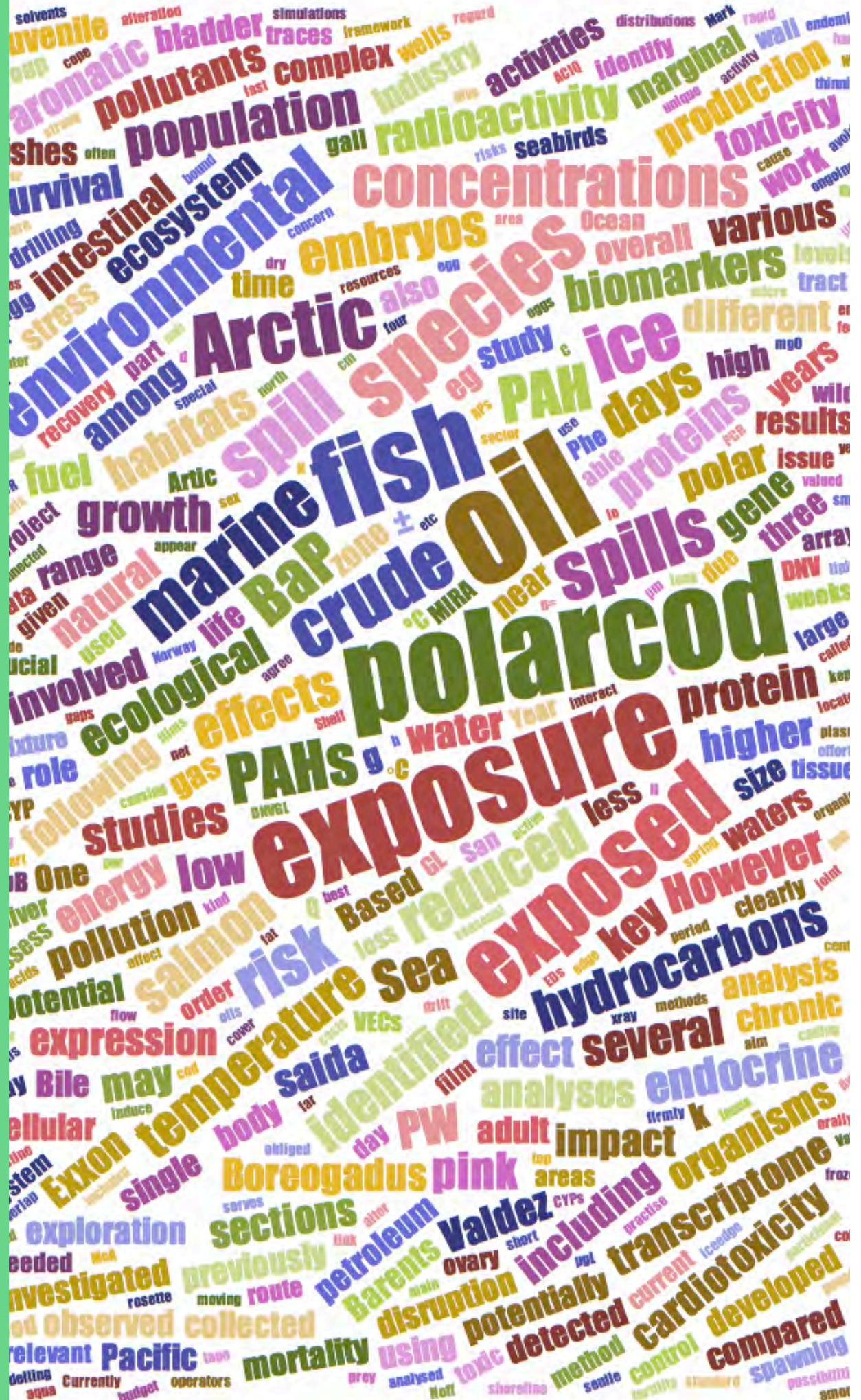


08:00	<b>Coffee/small talk</b>	13:30	Kristian Ingebrigtsen
08:30	Jasmine Nahrgang		Absorption and tissue distribution of $^{14}\text{C}$ -labelled Phenanthrene and benzo(a)pyrene in polar cod ( <i>Boreogadus saida</i> ) after oral exposure.
08:45	Marte Braathen	14:00	Jasmine Nahrgang
	Polar cod ( <i>Boreogadus saida</i> ) in environmental risk assessments of oil spills in the ice edge ecosystem		Uptake of Phenanthrene in polar cod at two temperatures.
09:15	Ron Heintz	14:30	Ireen Vieweg
	Delayed effects of embryonic exposure to PAHs can be detected at population levels.		Transcription levels of genes related to lipid homeostasis and endocrine disruption in polar cod ( <i>Boreogadus saida</i> ).
10:00	Jasmine Nahrgang	15:00	Miren Cajaraville
	Developmental toxicity of low levels of crude oil WSF on polar cod embryos.		TITLE
10:30	<b>Coffee break</b>	15:30	<b>Coffee break</b>
11:00	Øivind Andersen	16:00	Morgan Bender
	Transcriptome response of polar cod to oil exposure and elevated temperature.		Physiological responses to dietary crude oil in the Arctic key species polar cod.
11:30	You Song	16:30	Perrine Geraudie
	Global transcript changes in the liver of polar cod ( <i>Boreogadus saida</i> ) exposed to pollutants .		<i>In vivo</i> effects of environmental concentrations of produced water on the reproductive function of polar cod.
12:00	Marianne Brattås	17:00	Marianne Frantzen
	Alterations in the hepatic proteome of polar cod ( <i>Boreogadus saida</i> ) after dietary exposure to benzo(a)pyrene.		OGP project?
12:30	<b>Lunch</b>	17:30	Close up
		18:00	POLARISATION
			Status, plans and small talk
		2100	<b>Dinner at Tight</b>



# UNDER CONSTRUCTION

# ABSTRACTS

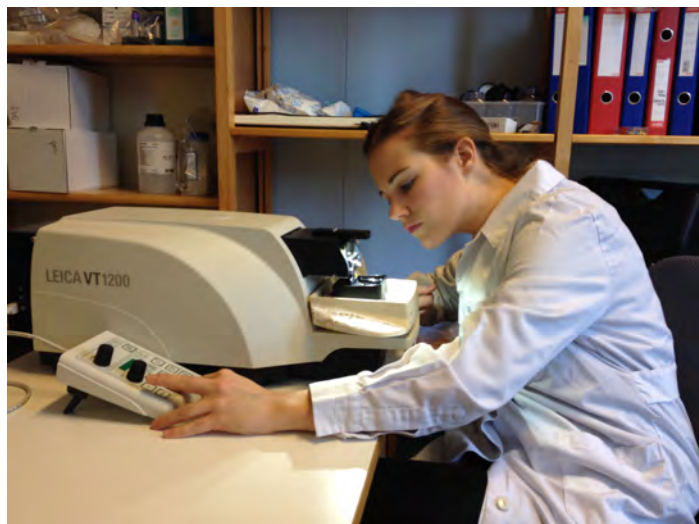






# PARTICIPANTS

NAME		MAIN INSTITUTION	COUNTRY	CONTACT
Andersen	Øivind	NOFIMA	NORWAY	<a href="mailto:Oivind.Andersen@Nofima.no">Oivind.Andersen@Nofima.no</a>
Aranguren	Libe	UiT- The Arctic Univ of Norway	NORWAY	<a href="mailto:lar007@post.uit.no">lar007@post.uit.no</a>
Bakke J.	Marit	Norwegian School of vet Science	NORWAY	<a href="mailto:marit.bakke@nmbu.no">marit.bakke@nmbu.no</a>
Bender	Morgan	UiT- The Arctic University of Norway	NORWAY	<a href="mailto:morganlizabethbender@gmail.com">morganlizabethbender@gmail.com</a>
Benedetti	Maura	University of Ancona	ITALY	<a href="mailto:m.benedetti@univpm.it">m.benedetti@univpm.it</a>
Berge	Jørgen	UiT- The Arctic University of Norway	NORWAY	<a href="mailto:jorgen.berge@uit.no">jorgen.berge@uit.no</a>
Bilbao	Eider	University of the Basque Country	SPAIN	<a href="mailto:eider.bilbao@ehu.es">eider.bilbao@ehu.es</a>
Braathen	Marte	DNV-GL	NORWAY	<a href="mailto:Marte.Braathen@dnvgl.com">Marte.Braathen@dnvgl.com</a>
Brattås	Marianne	University of Bergen	NORWAY	<a href="mailto:marianne.brattas@mbi.uib.no">marianne.brattas@mbi.uib.no</a>
Cajaraville	Miren	University of the Basque Country	SPAIN	<a href="mailto:miren.p.cajaraville@ehu.es">miren.p.cajaraville@ehu.es</a>
Christiansen S	Jørgen	UiT- The Arctic University of Norway	NORWAY	<a href="mailto:jorgen.s.christiansen@uit.no">jorgen.s.christiansen@uit.no</a>
Dubourg	Paul	University of applied sciences, Bremen	GERMANY	<a href="mailto:pldubourg@googlemail.com">pldubourg@googlemail.com</a>
Frantzen	Marianne	Akvaplan-niva	NORWAY	<a href="mailto:marianne.frantzen@akvaplan.niva.no">marianne.frantzen@akvaplan.niva.no</a>
Goksøyr	Anders	University of Bergen	NORWAY	<a href="mailto:Anders.Goksoyr@bio.uib.no">Anders.Goksoyr@bio.uib.no</a>
Haakon	Hop	Norwegian Polar Institute	NORWAY	<a href="mailto:haakon.hop@npolar.no">haakon.hop@npolar.no</a>
Heintz	Ron	National Oceanic and Atmospheric Administration	USA	<a href="mailto:ron.heintz@noaa.gov">ron.heintz@noaa.gov</a>
Ingebrigtsen	Kristian	Norwegian School of Veterinary Science	NORWAY	<a href="mailto:kristian.ingebrigtsen0@nmbu.no">kristian.ingebrigtsen0@nmbu.no</a>
Karamushko	Larisa	Murmansk Marine Biological Institute	RUSSIA	<a href="mailto:karamushkol@mmbi.info">karamushkol@mmbi.info</a>
Karamushko	Oleg	Murmansk Marine Biological Institute	RUSSIA	<a href="mailto:karamushko_o@mmbi.info">karamushko_o@mmbi.info</a>
Korshunova	Ekaterina	UiT- The Arctic University of Norway	NORWAY	<a href="mailto:ekaterina.korshunova@uit.no">ekaterina.korshunova@uit.no</a>
Krasnov	Aleksei	NOFIMA	NORWAY	<a href="mailto:aleksei.krasnov@nofima.no">aleksei.krasnov@nofima.no</a>
Kunz	Kristina	Alfred Wegner Institute	GERMANY	<a href="mailto:Kristina.Kunz@awi.de">Kristina.Kunz@awi.de</a>
Lambert	Elliot	World Wide Life Foundation	NORWAY	<a href="mailto:elambert@wwf.no">elambert@wwf.no</a>
Lerebours	Adélaïde	University of Portsmouth	UK	<a href="mailto:adelaide.lerebours@port.ac.uk">adelaide.lerebours@port.ac.uk</a>
Madsen	Matias	Akvaplan-niva/UiT	NORWAY	<a href="mailto:matias.langgaard.madsen@akvaplan.niva.no">matias.langgaard.madsen@akvaplan.niva.no</a>
Meador	James	National Oceanic and Atmospheric Administration	USA	<a href="mailto:james.meador@noaa.gov">james.meador@noaa.gov</a>
Moldes-Anaya	Angel	UiT- The Arctic University of Norway	NORWAY	<a href="mailto:angel.moldes-anaya@uit.no">angel.moldes-anaya@uit.no</a>
Nahrgang	Jasmine	UiT- The Arctic University of Norway	NORWAY	<a href="mailto:jasmine.m.nahrgang@uit.no">jasmine.m.nahrgang@uit.no</a>
Nechev	Jordan	UiT- The Arctic University of Norway	NORWAY	<a href="mailto:jordan.nechev@uit.no">jordan.nechev@uit.no</a>
Rusten	Marte	DNV-GL	NORWAY	<a href="mailto:Marte.Rusten@dnvgl.com">Marte.Rusten@dnvgl.com</a>
Schmidt	Matthias	Alfred Wegner Institute	GERMANY	<a href="mailto:Schmidt@awi.de">Schmidt@awi.de</a>
Song	You	Norwegian Institute for Water research (NIVA)	NORWAY	<a href="mailto:you.song@nmbu.no">you.song@nmbu.no</a>
Storch	Daniela	Alfred Wegner Institute	GERMANY	<a href="mailto:Daniela.Storch@awi.de">Daniela.Storch@awi.de</a>
Tollefsen	Knut-Erik	Norwegian Institute for Water research (NIVA)	NORWAY	<a href="mailto:knut.erik.tollefsen@niva.no">knut.erik.tollefsen@niva.no</a>
Varpe	Øystein	Akvaplan-niva	NORWAY	<a href="mailto:oystein.varpe@akvaplan.niva.no">oystein.varpe@akvaplan.niva.no</a>
Vieweg	Ireen	UiT- The Arctic University of Norway	NORWAY	<a href="mailto:ireen.vieweg@uit.no">ireen.vieweg@uit.no</a>
Wasbotten	Ingar	Unilab analyse AS	NORWAY	<a href="mailto:ingar.wasbotten@unilab.no">ingar.wasbotten@unilab.no</a>
Windich	Heidrun	Alfred Wegner Institute	GERMANY	<a href="mailto:Heidrun.Windisch@awi.de">Heidrun.Windisch@awi.de</a>





# POLARISATION



The Research Council  
of Norway