

QUARTERLY REPORT ON PAST SPACE WEATHER

Q1 2026

01.01.2026 – 31.03.2026

SUNSPOT NUMBERS

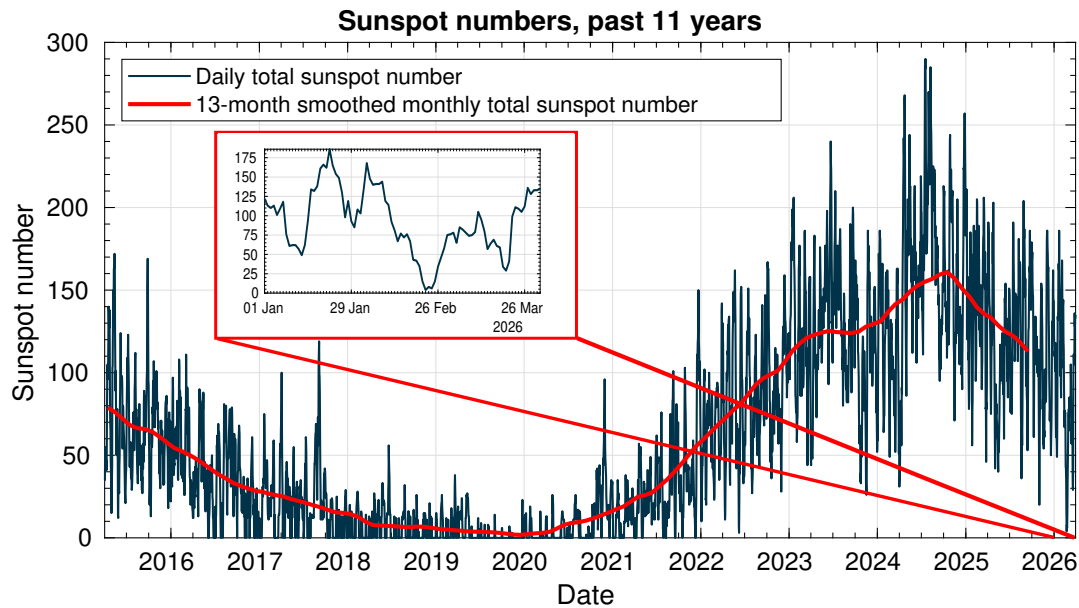


Figure 1: Sunspot numbers for the past 11 years and the last quarter. (Data from SILSO)

FLARES

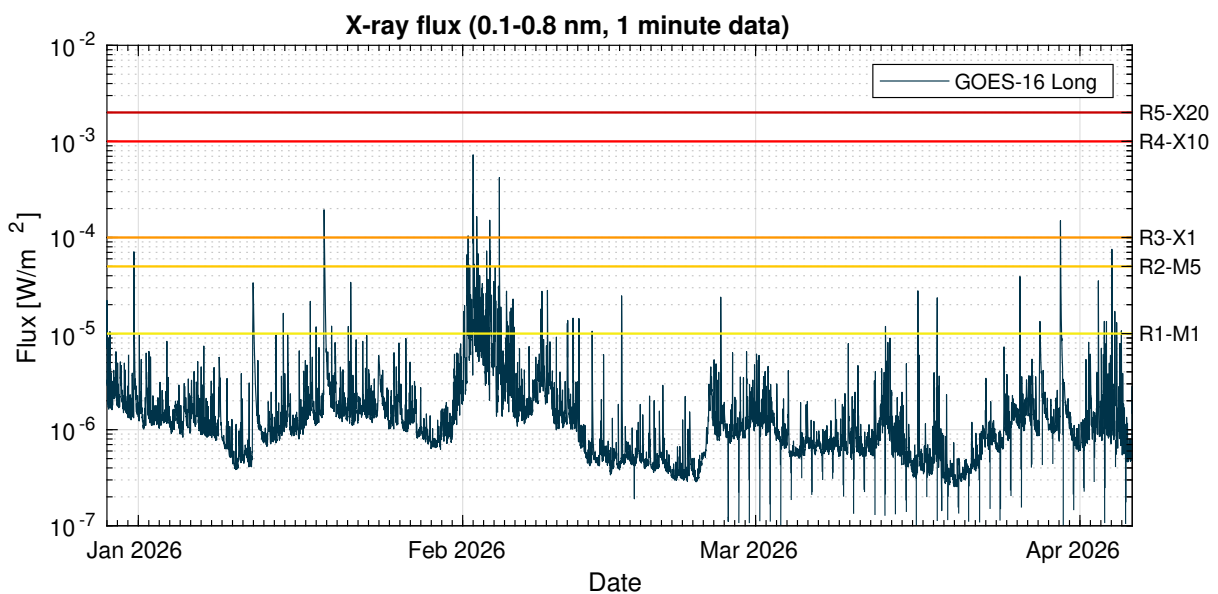


Figure 2: GOES X-ray flux (GOES – SWPC/NOAA) together with the NOAA Space weather scale thresholds for radio blackouts. (For more information on the NOAA Space Weather Scales, see <https://www.swpc.noaa.gov/noaa-scales-explanation>)

SOLAR ENERGETIC PARTICLES

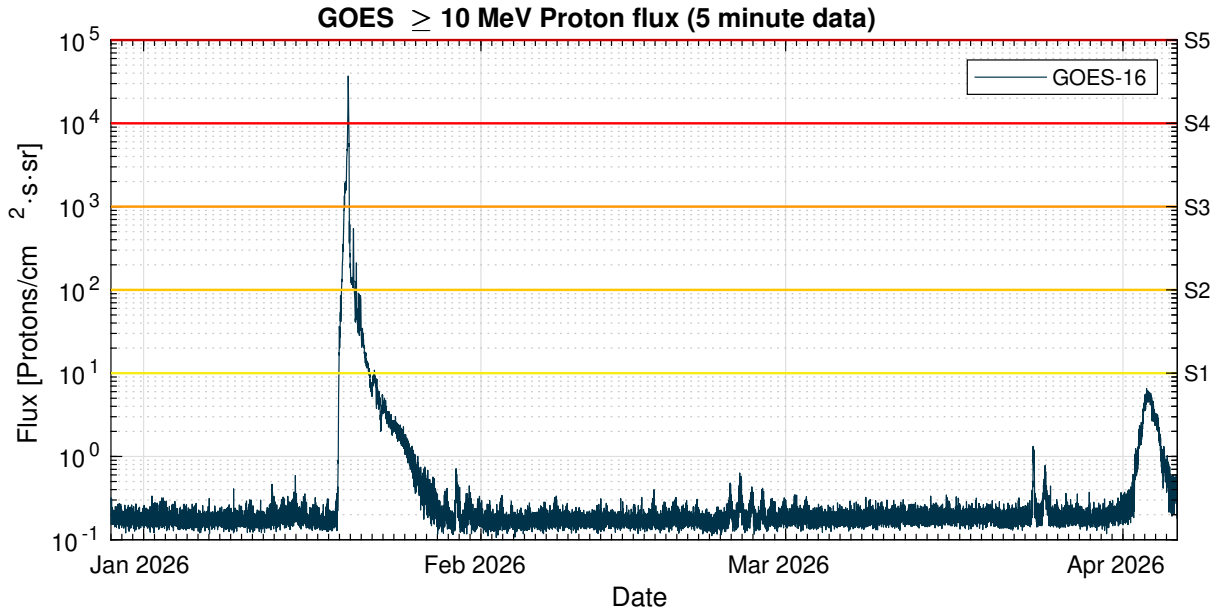


Figure 3: GOES proton flux (GOES - SWPC/NOAA) together with the NOAA Space weather scale thresholds for Solar Radiation Storms. (For more information on the NOAA Space Weather Scales, see <https://www.swpc.noaa.gov/noaa-scales-explanation>)

SOLAR WIND

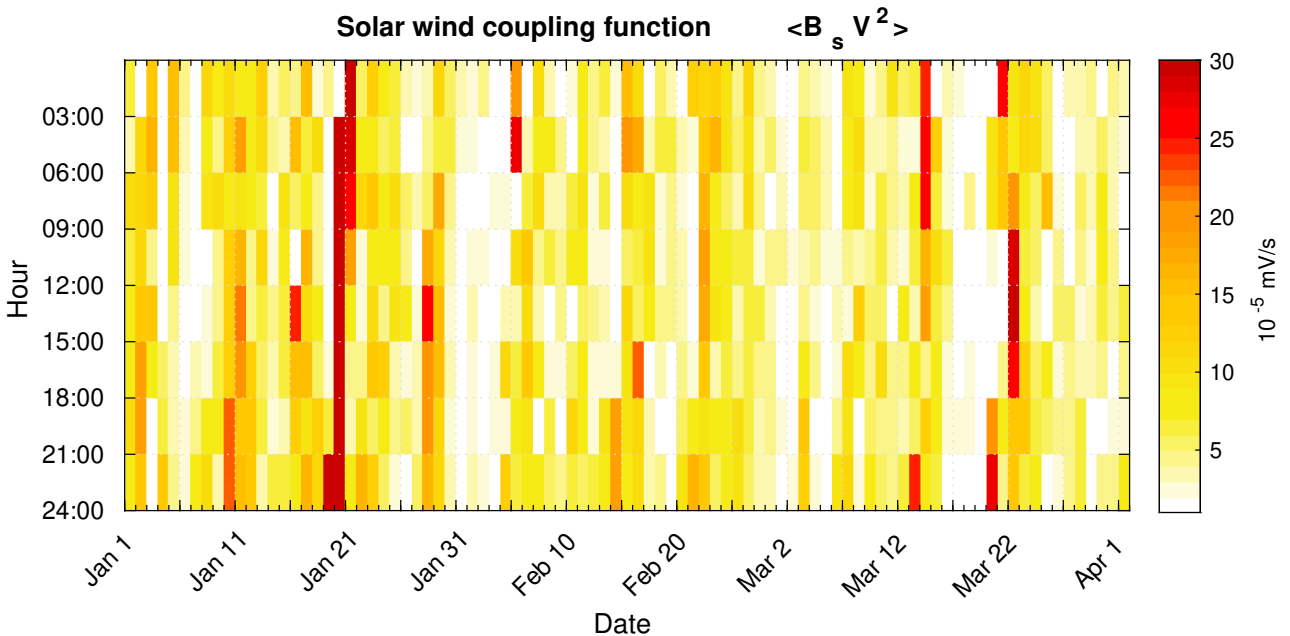


Figure 4: 3-hourly mean values of the Solar wind coupling function $\langle B_s V^2 \rangle$ based on ACE data. (NOAA/SWPC)

GLOBAL GEOMAGNETIC CONDITIONS

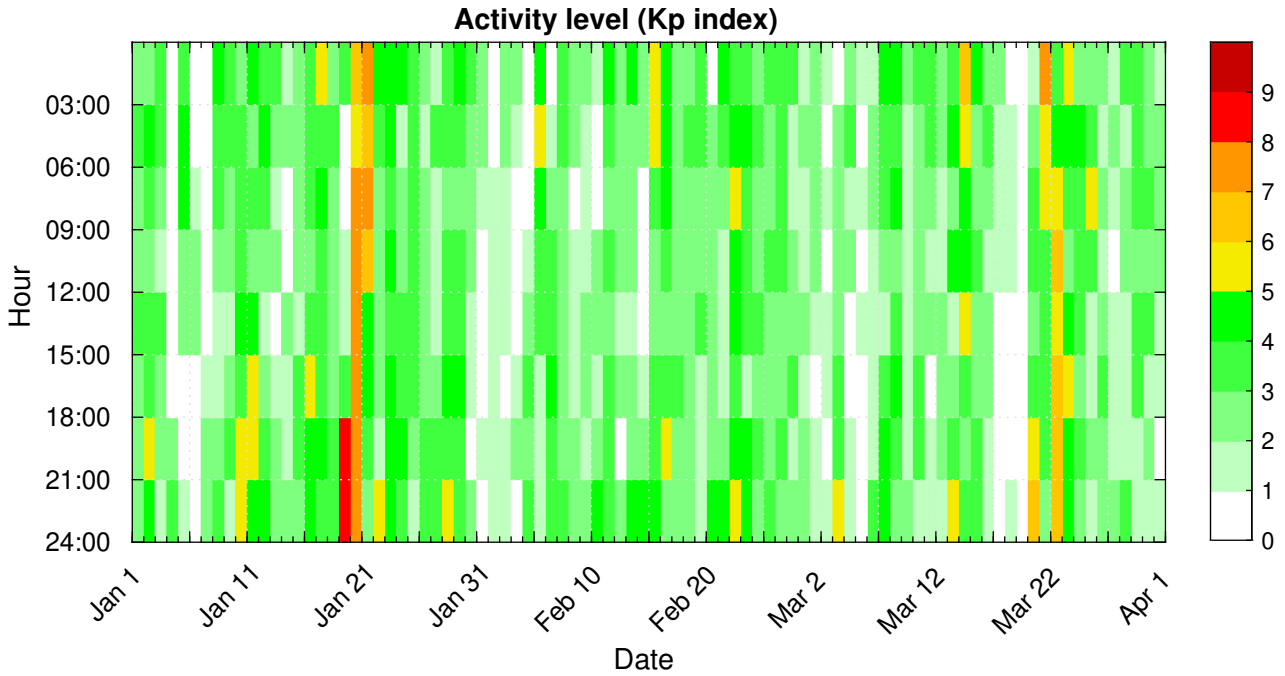


Figure 5: Kp index. (Data from GFZ Potsdam.)

LOCAL GEOMAGNETIC CONDITIONS

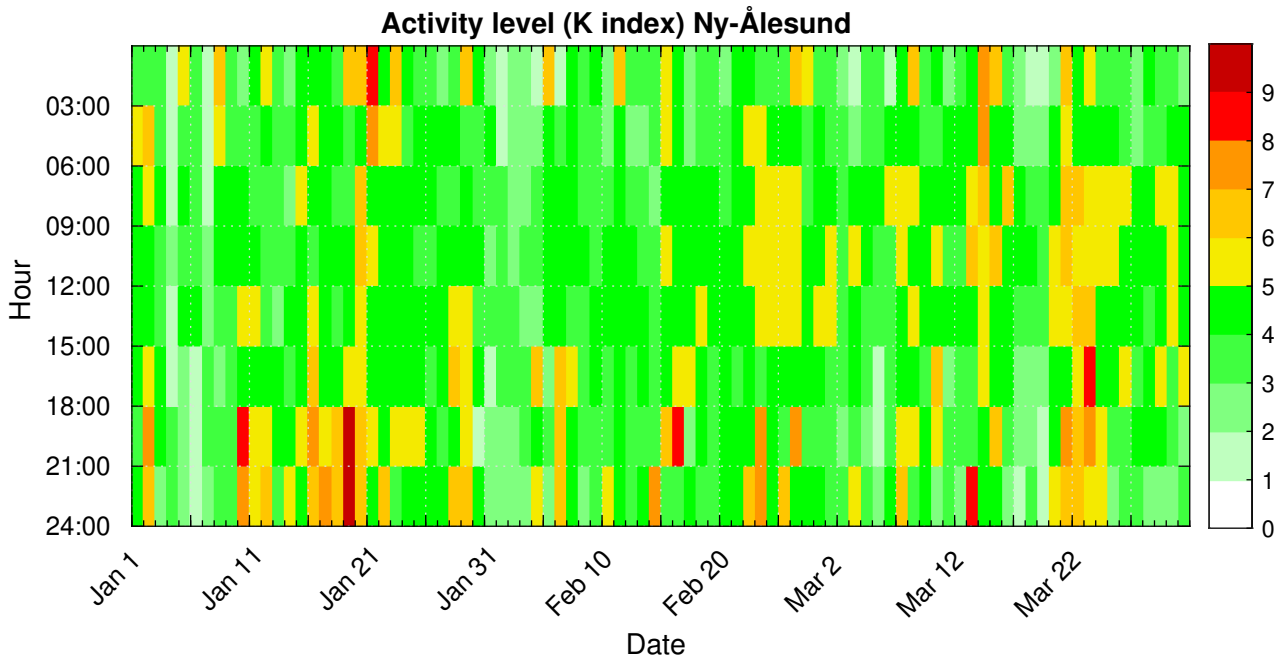


Figure 6: K index at Ny-Ålesund.

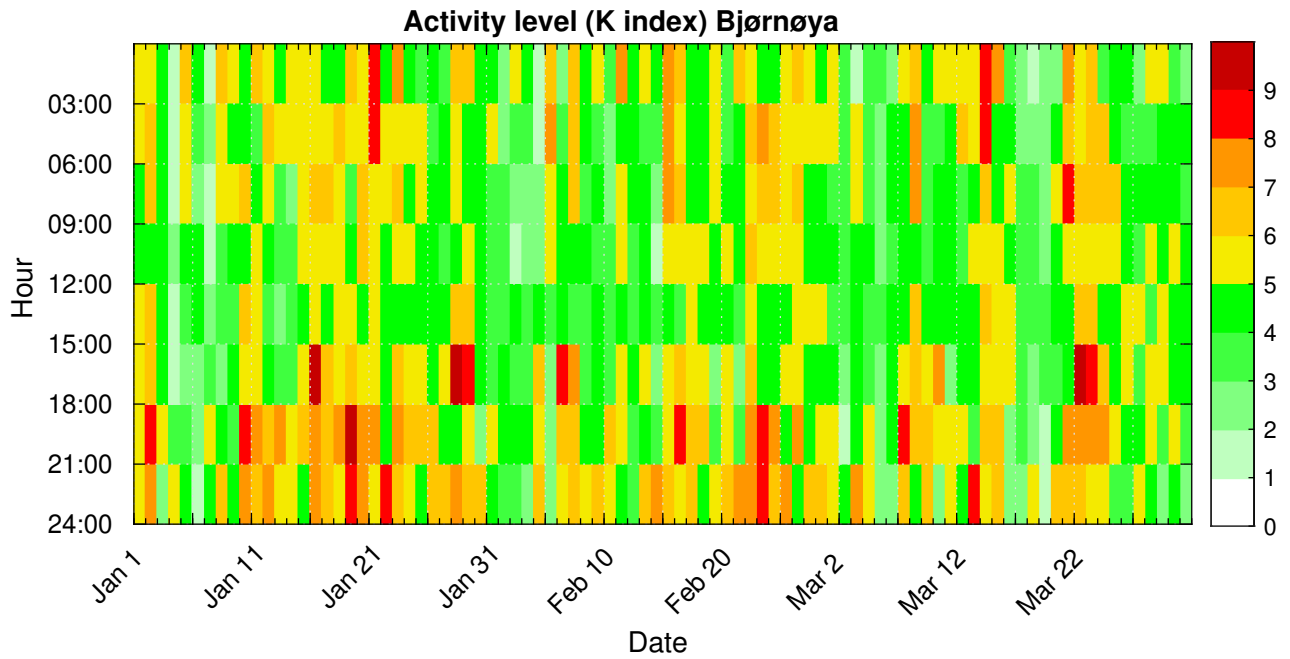


Figure 7: K index at Bjørnøya. Unreliable data due to technical issues since Jul 9.

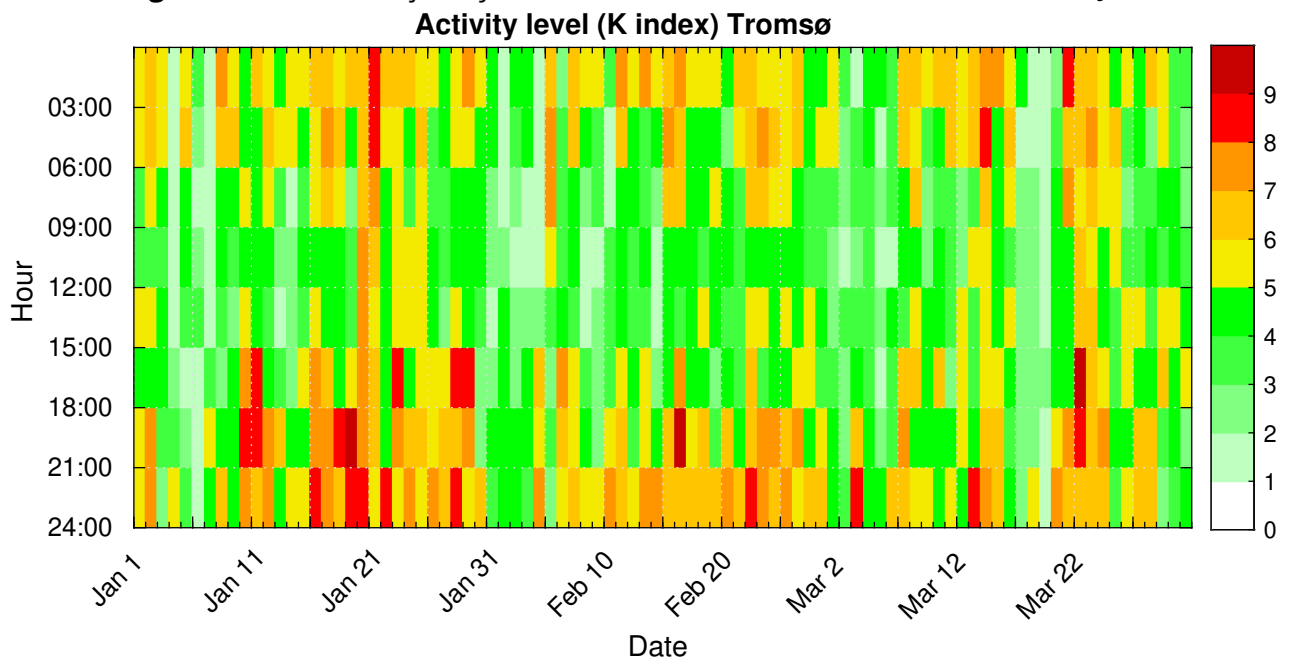


Figure 8: K index at Tromsø.

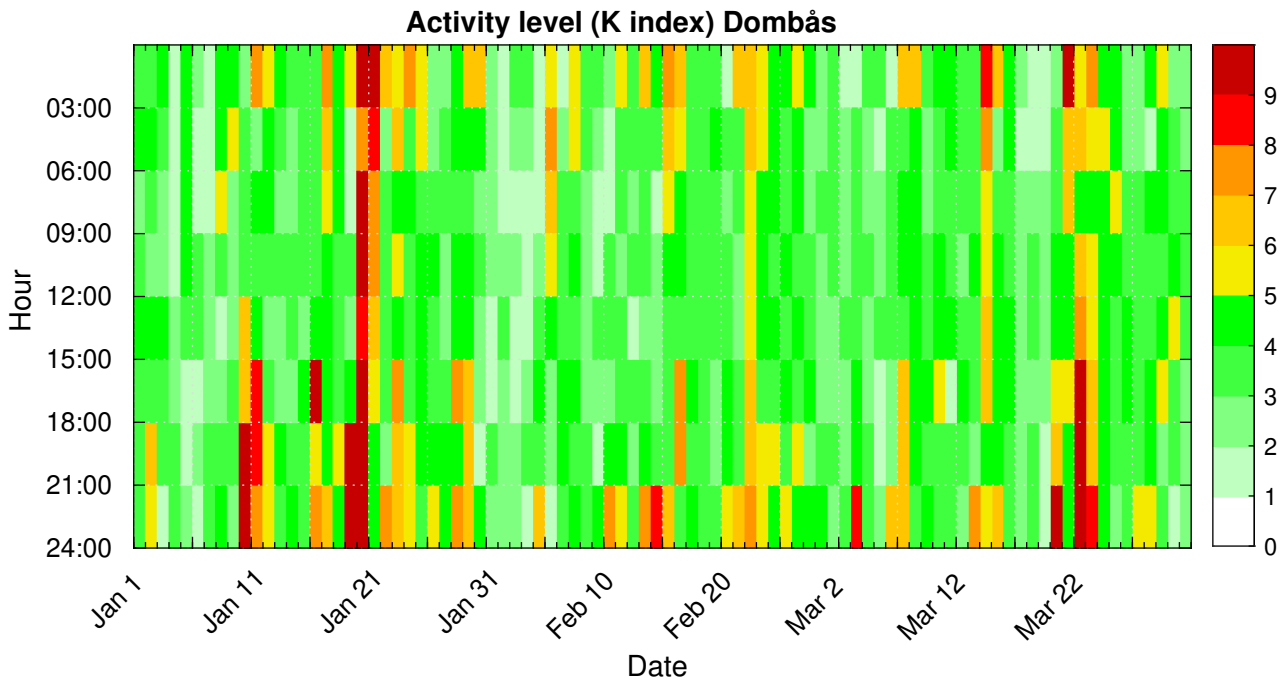


Figure 9: K index at Dombås.

CORONAL MASS EJECTIONS AND HIGH-SPEED STREAMS

A list of high-speed streams (HSS) and coronal mass ejections (CMEs) that caused a global geomagnetic disturbance of minor storm (Kp 5) or higher are listed in the table below. The listed date is the first day of the geomagnetic disturbance where the Kp index crossed the threshold for a minor storm. The maximum Kp is the maximum Kp index value caused by the HSS or CME.

Table 1: Major geoeffective coronal mass ejections (CMEs) and high-speed streams (HSS)

Date	Type	Storm level	Max Kp
02. January 2026	HSS	Minor	5.0
10. January 2026	CME	Minor	5.67
16. January 2026	HSS	Minor	5.0
19. January 2026	CME	Severe	8.67
28. January 2026	HSS	Minor	5.0
05. February 2026	CME	Minor	5.33
15. February 2026	HSS	Minor	5.33
22. February 2026	HSS	Minor	5.33
03. March 2026	HSS	Minor	5.0
13. March 2026	HSS	Moderate	6.0
20. March 2026	CME	Strong	7.0
22. March 2026	CME+HSS	Moderate	6.67



25. March 2026

CME

Minor

5.0

(Source: Solar Influences Data analysis Center – RWC Belgium and GFZ Potsdam)



ACKNOWLEDGEMENTS

Data from:

SILSO - <http://www.sidc.be/silso/>

GOES - <https://www.ngdc.noaa.gov/stp/satellite/goes/index.html>

DONKI - <https://kauai.ccmc.gsfc.nasa.gov/DONKI/>

DSCOVER/ACE – NASA/NOAA /SWCP - <https://www.ngdc.noaa.gov/dscovr/portal/index.html#/>

GFZ Potsdam - <https://www.gfz-potsdam.de/en/kp-index/>