

TUNDRA – Drivers of change in circumpolar tundra ecosystems



Tromsø Forskningsstiftelse

Leader: Vera Hausner, UiT

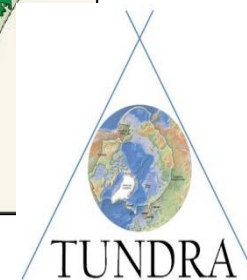
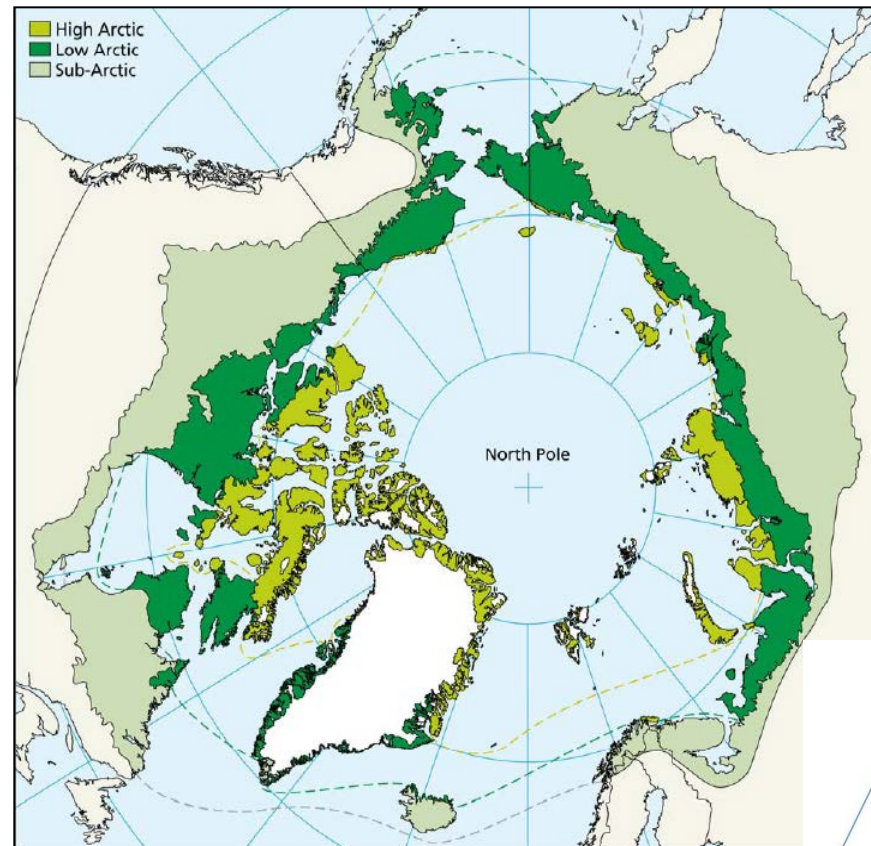
2010-2013



Санкт-Петербургский
государственный
университет

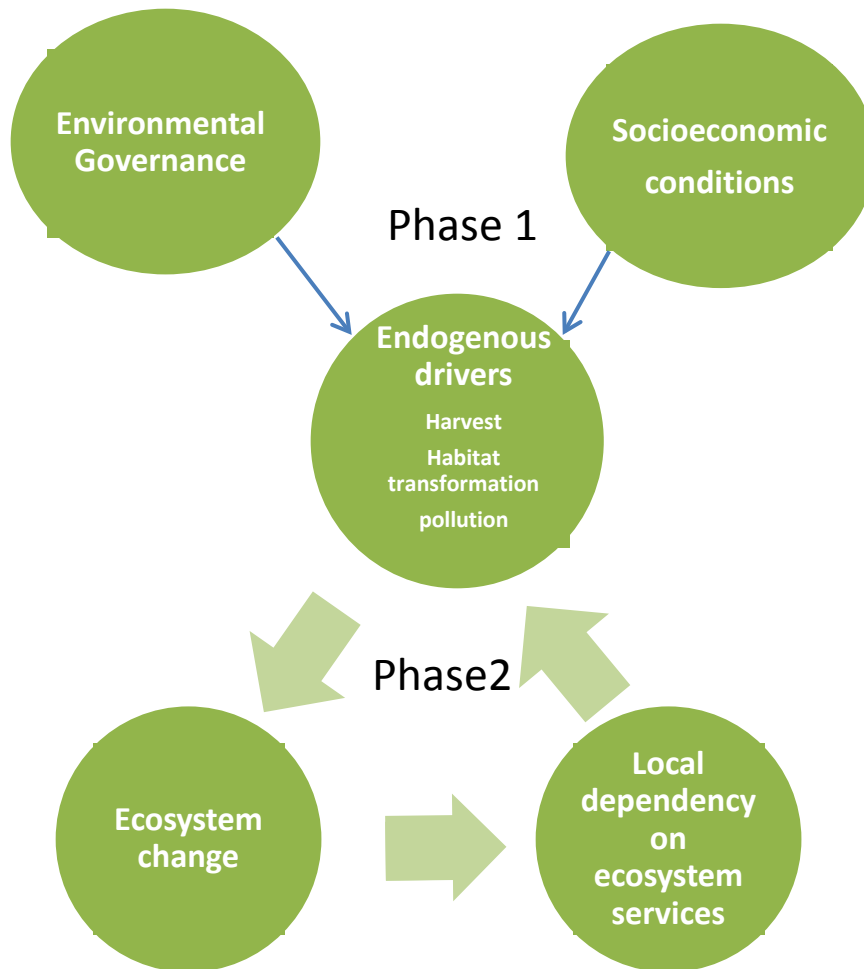


UNIVERSITY OF
SASKATCHEWAN





TUNDRA: stepwise approach



1. How does environmental governance and socioeconomic drivers influence

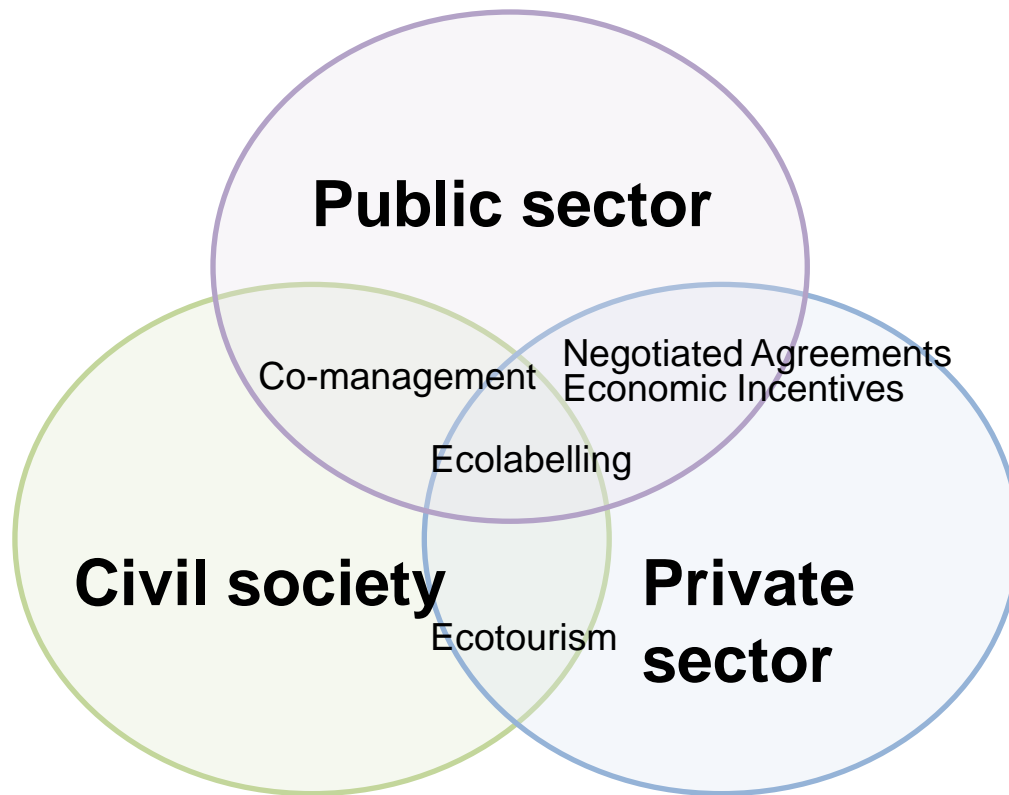
Direct drivers

Ecosystem States

Ecosystem services important for communities

2. What do our results indicate in terms of implementing the ecosystem approach in circumpolar tundra ecosystems

Which governance system is sustainable?

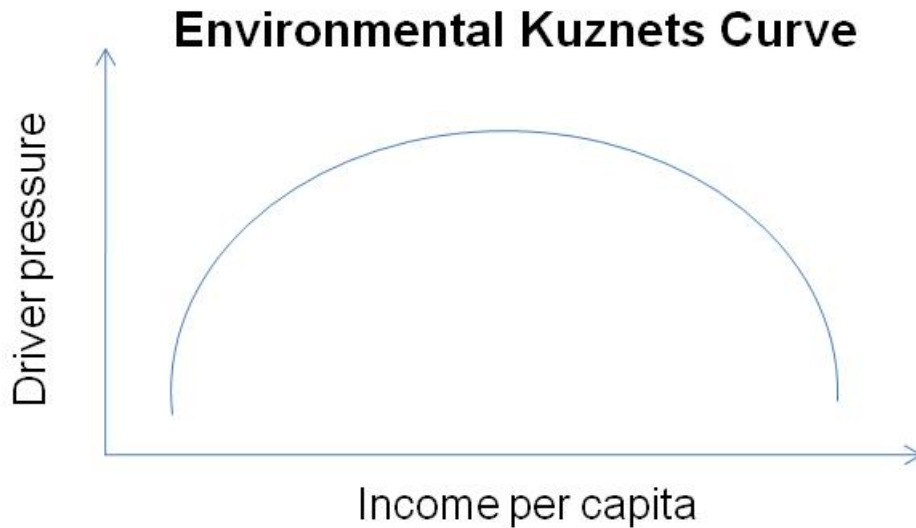


Research question:

How are dissimilarities in environmental governance practices related to direct drivers (land use, harvesting and pollution)?



Socio-economic conditions



- Reversibility?
- Economic structure?
Income distribution?
- Human development?
(education, health)
- Governance practices?
- Global economy?



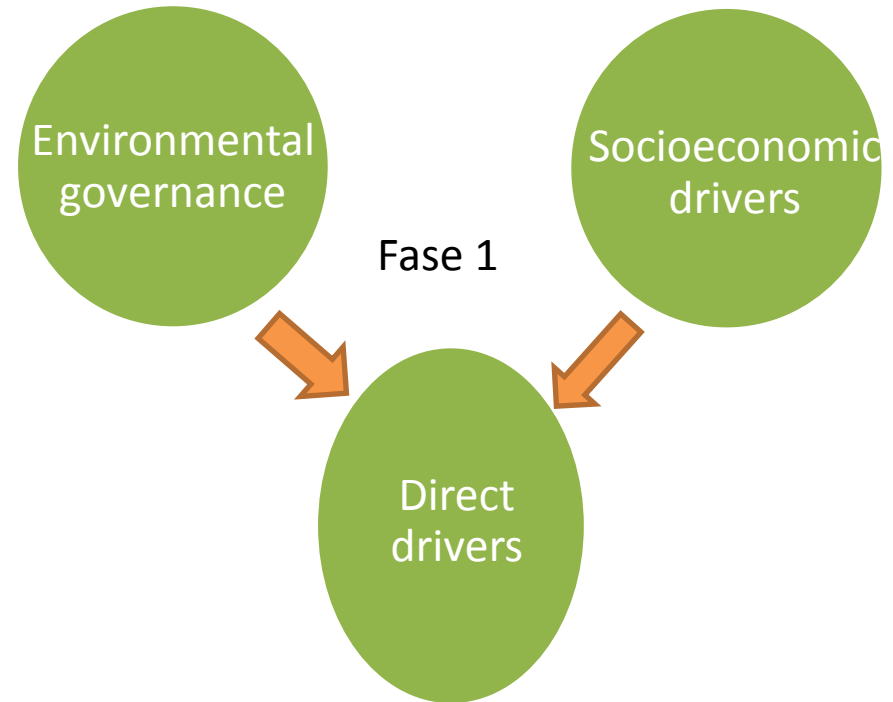
Research questions:

How are contrasts in economic and human development related to direct drivers (land use, harvesting and pollution)?

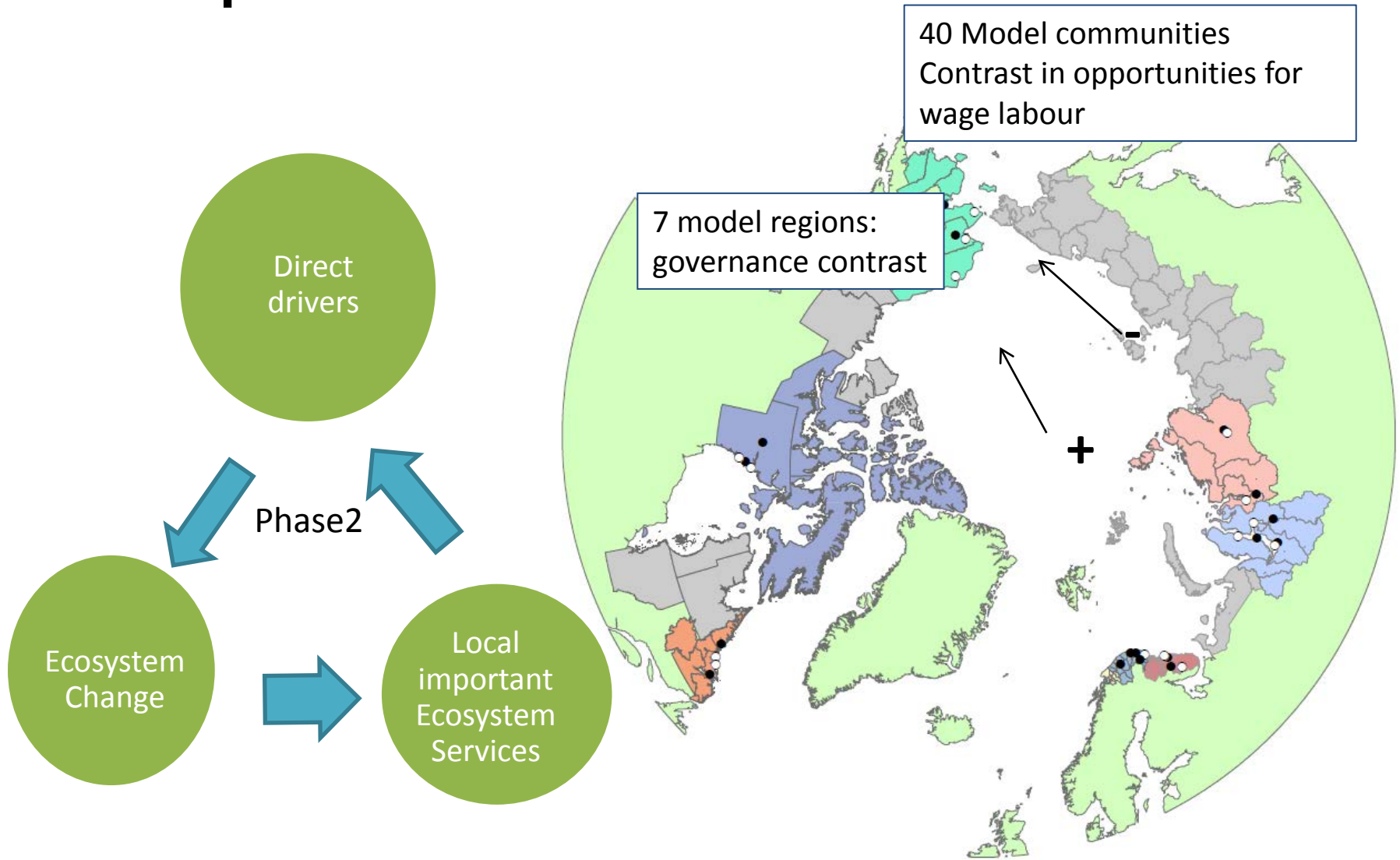


Direct drivers

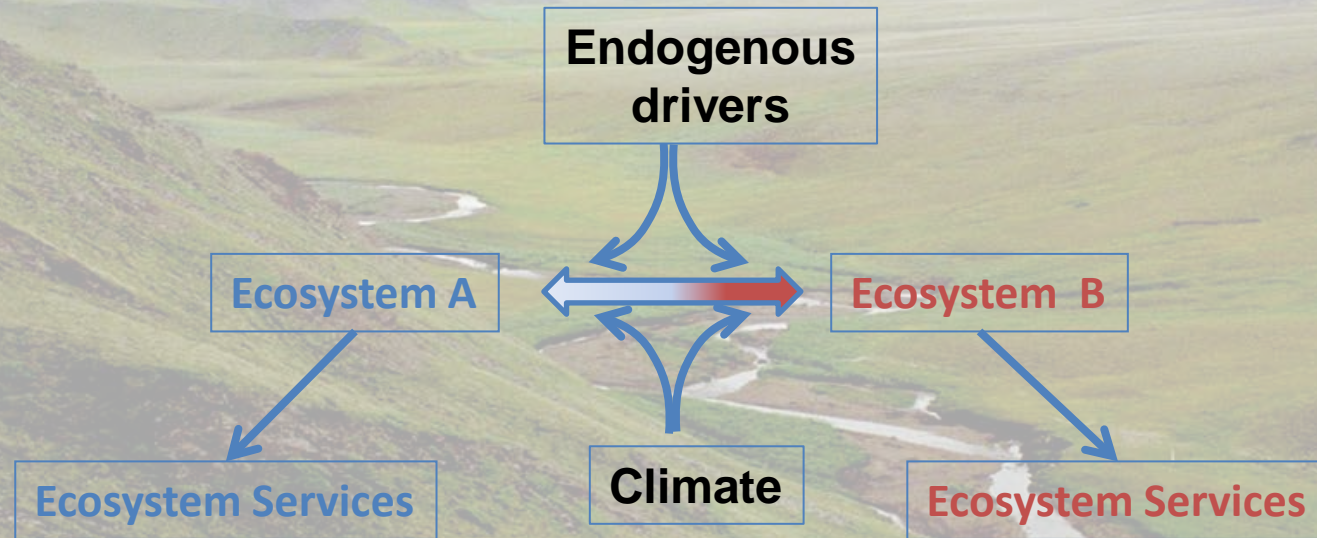
- Data
- Pollution
- Hunting
- Rendeer herding
- Habitat transformation



Step 2: 40 model communities



Step 2: In depth studies



How dependent are local communities on ecosystem services?

How does governance function in practice, emphasizing the experience of resource-dependent communities?